



SDA/DC19TF-02/2021-2022/1960

February 25, 2022

## NOTIFICATION ON ACTIVATION OF ZONE SYSTEM FOR SAMTSE AND NORBUGANG GEWOG

This is to notify the general public that with the emergence of continuous COVID-19 cases from the community and considering the need to further assess and contain the disease spread, Zone System for **7 days** in Samtse and Norbugang Gewog is, hereby, activated with immediate effect. The following measures shall be implemented during the activation of Zoning System.

### 1. Movement

- One individual from each household in Samtse Throm shall be allowed to move with movement card within the respective zone for essential shopping.
- The zone timing are as follows:  
**M: 9:00 AM – 12:00 Noon**  
**A: 2:00 PM – 5:00 PM**
- In the Gewogs (Samtse and Norbugang), movement shall be restricted within the Chiwogs.
- Inter-Gewog and Inter-Chiwog movement shall **NOT** be allowed.
- Individuals shall be allowed to carry out farming and livestock activities within their premises without interacting with neighbours.
- **NO** movement shall be allowed from Red Building/Cluster.
- Individuals coming out for essential shopping must follow all the COVID-19 protocols (wearing mask, hand washing, using Druk Trace App., and physical distancing etc.) at all times.
- **NO** movement of vehicles are allowed, unless authorized for essential purposes.
- Medical emergencies shall be attended to and their movement will be facilitated upon verification by concerned health personnel.
- Contact the following numbers/helpline for medical emergencies and other enquiries:

Gewog	Medical Helpline	General Helpline
Samtse	1182	1077
Norbugang	17161754	

### 2. Office/School/Institution

- Offices and institutions shall operate under **WORK FROM HOME** mode as notified by RCSC.
- Schools shall continue to operate under containment mode.



### 3. Shops/Business

- Only essential shops identified and approved by the Dzongkhag/Gewog Essential Services Team shall be allowed to open from **9:00 AM to 5:00 PM**.
- The identified essential shops must undergo RT-PCR test prior to opening of shops.
- The identified essential shops must operate under self-containment mode.

### 4. Essential supplies

- Home delivery of essential supplies to Red Building/Clusters shall be carried out by the Essential Delivery Team. Requisition for essential supplies shall be placed with **1077** from **9:00 AM to 12:00 Noon**.
- Transport of essential items to and from Samtse Throm shall be facilitated with e-movement pass on **Tuesdays, Thursdays and Saturdays** only.
- Transport of livestock and agriculture products shall be facilitated with e-movement pass.

### 5. Industries and Construction Activities

- Industries shall be allowed to operate under containment mode with prior approval from the DC19TF.
- Construction activities shall be allowed under containment mode with prior approval from the DC19TF.
- Transport of fuel shall be facilitated with e-movement pass. The driver transporting the fuel must stay under containment.


### 6. Import/Export

- Import of essential goods and construction materials shall be allowed on **Monday, Wednesday and Friday**.
- Export shall be allowed under containment mode with prior approval from DC19TF.

### 7. Public gathering/Social events

- **NO** public gathering (*ritual, rimdros, or other ceremonies*) shall be allowed.
- **NO** games and sporting activities shall be allowed.
- Funeral rites shall be limited to close family circles not exceeding **10 people** with prior approval from the DC19TF.

The general public may also call **1010** for any queries.

  
Dzongkhag  
Dzongkhag Administration  
Incident Commander  
DC19TF



རྒྱལ་ཁབ་འབྲུག་གཞི་རྒྱུ་།  
བསམ་ཅི་ཡོད་ཁག  
Royal Government of Bhutan  
Dzongkhag Administration  
SAMTSE

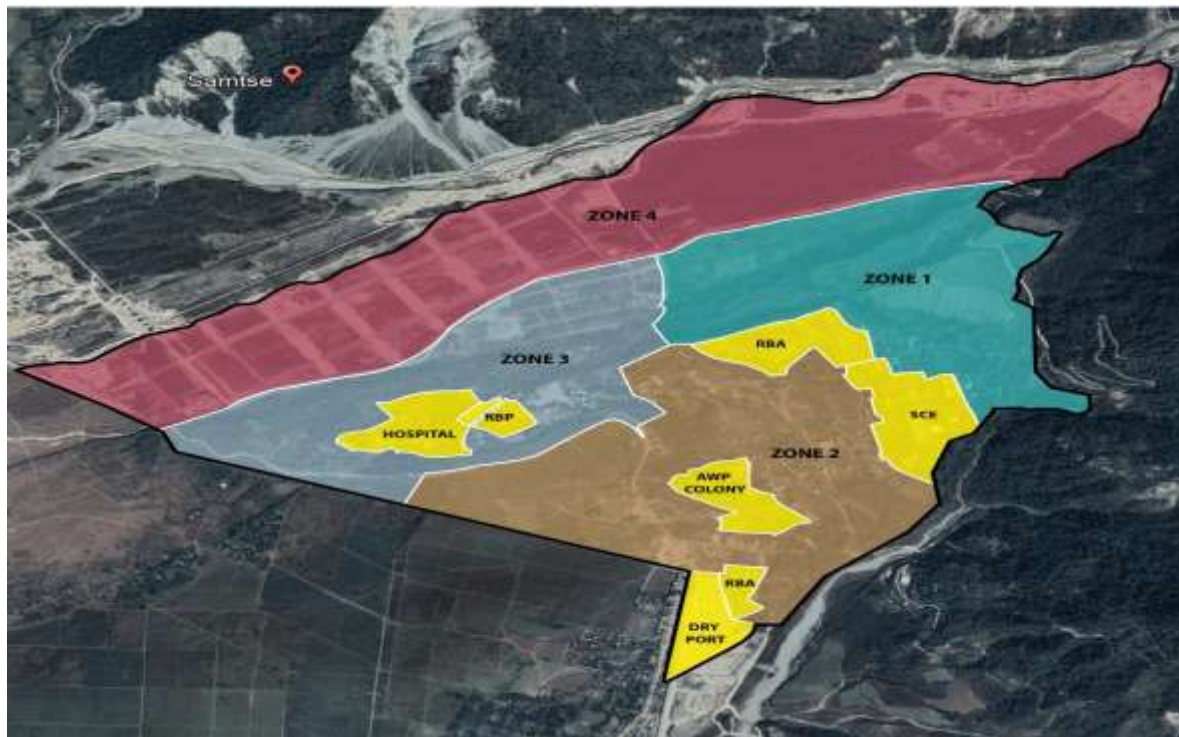


Figure 1 SAMTSE TOWN



Figure 2 SAMTSE GEWOG





Figure 3 NORBUGANG GEWOG